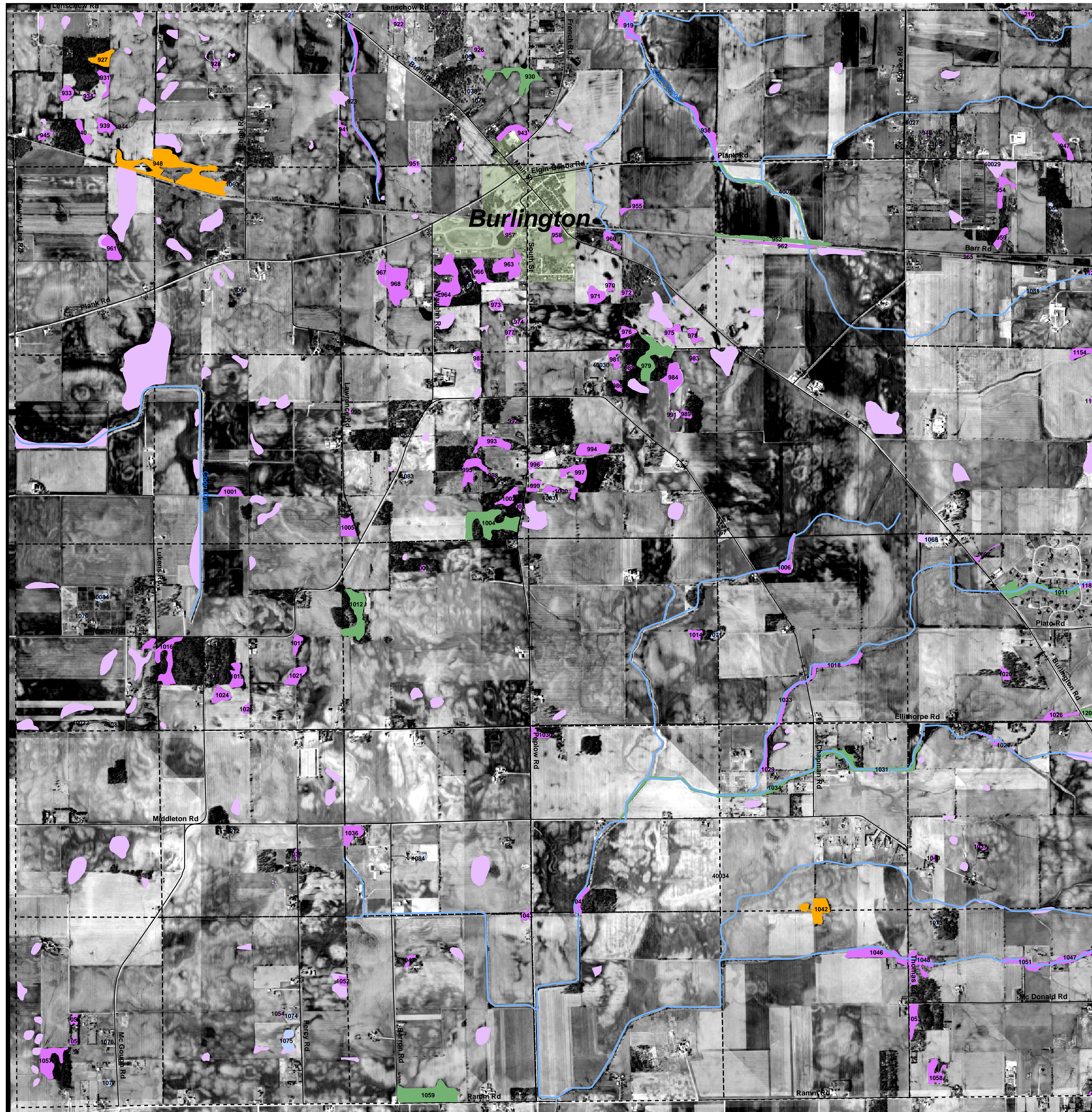


Kane County Advanced Identification of Aquatic Resources (ADID) Burlington Township



Kane County Townships

Hampshire	Rutland	Dundee
Burlington	Plato	Elgin
Virgil	Campton	St Charles
Kaneville	Blackberry	Geneva Batavia
Big Rock	Sugar Grove	Aurora

- Map Sections
- Expressways
- Major Roads

Rivers, Streams, and Ditches Biological Stream Characterization

- High Quality
- C,D, and E Quality
- Unrated

Wetland Type

- High Habitat Value
- High Functional Value
- Wetland
- Natural Open Water and Fox River
- Artificial Ponds
- ADID Farmed Wetlands
- Islands
- Fens
- NRCS Farmed Wetlands

This map was produced under the Advanced Identification (ADID) Program of the U.S. Environmental Protection Agency and the U.S. Army Corps of Engineers. Descriptions of the wetland inventory methodology and the wetland and stream designation criteria are available in the Kane County ADID Study Methodology.

The wetland boundaries shown are not jurisdictional delineations.

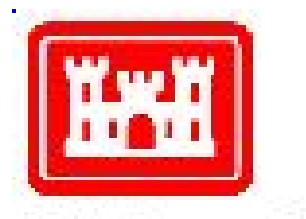
Note: Although the aerial photography displayed on this map was taken in 2001, the ADID data was based on aerial photography taken in 1996-1998 and then updated with photography from 2000. For this reason some features present on the 2001 photography may not be reflected in the ADID data.

Date of Map Creation: August 30, 2004
L. Barghusen, Senior Environmental Analyst

Watersheds and Non-point Source Programs Branch
Region 5
U.S. Environmental Protection Agency



Regulatory Branch
U.S. Army Corps of Engineers



US Army Corps of Engineers

