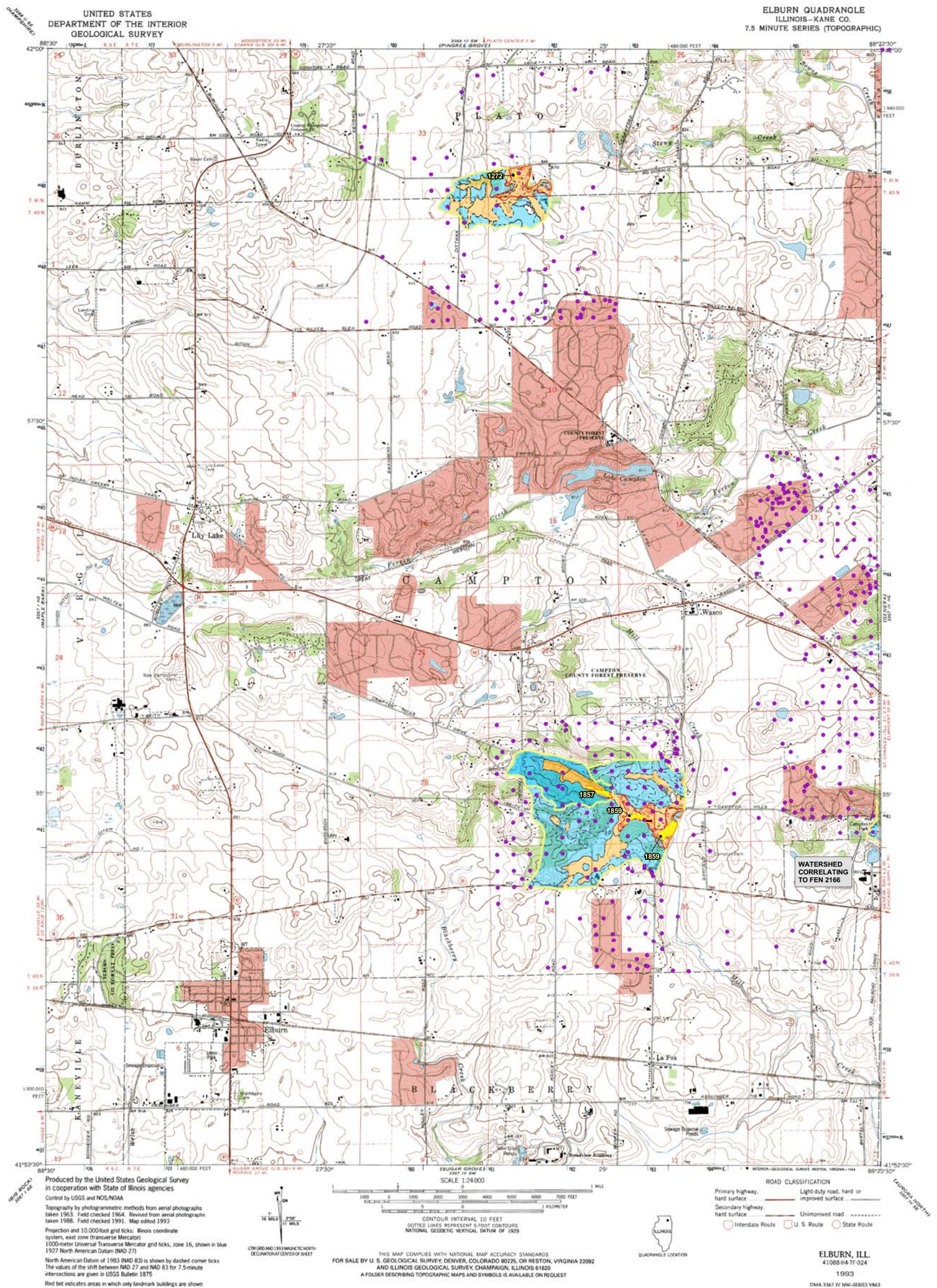


Kane County Fen Watersheds Location Elburn Quadrangle



KANE COUNTY DEPARTMENT OF ENVIRONMENTAL MANAGEMENT
719 Batavia Avenue
Geneva, IL 60134

Funded in part by a State/Tribal/Local wetland grant from the United States Environmental Protection Agency.
Grant #-CD975643-01

Elburn Quadrangle
Sheet 6 of 12
DATE: 02-09-04
REVISION DATE: 03-01-04
Source(s):
ADID wetlands and fen outlines provided by NIPC
USDA-NRCS 2001 SSURGO (Soil Survey Geographic) data

Legend:

- ISGS Well Data Point
- Fen Polygons (ADID)
- Soils Boundary (USDA-NRCS 2001 SSURGO)
 - Flow Through/Discharge Soils
 - Recharge Soils
- Fen Watershed Boundary
- Wetland Boundary (ADID)

0 2,000 4,000 8,000 Feet