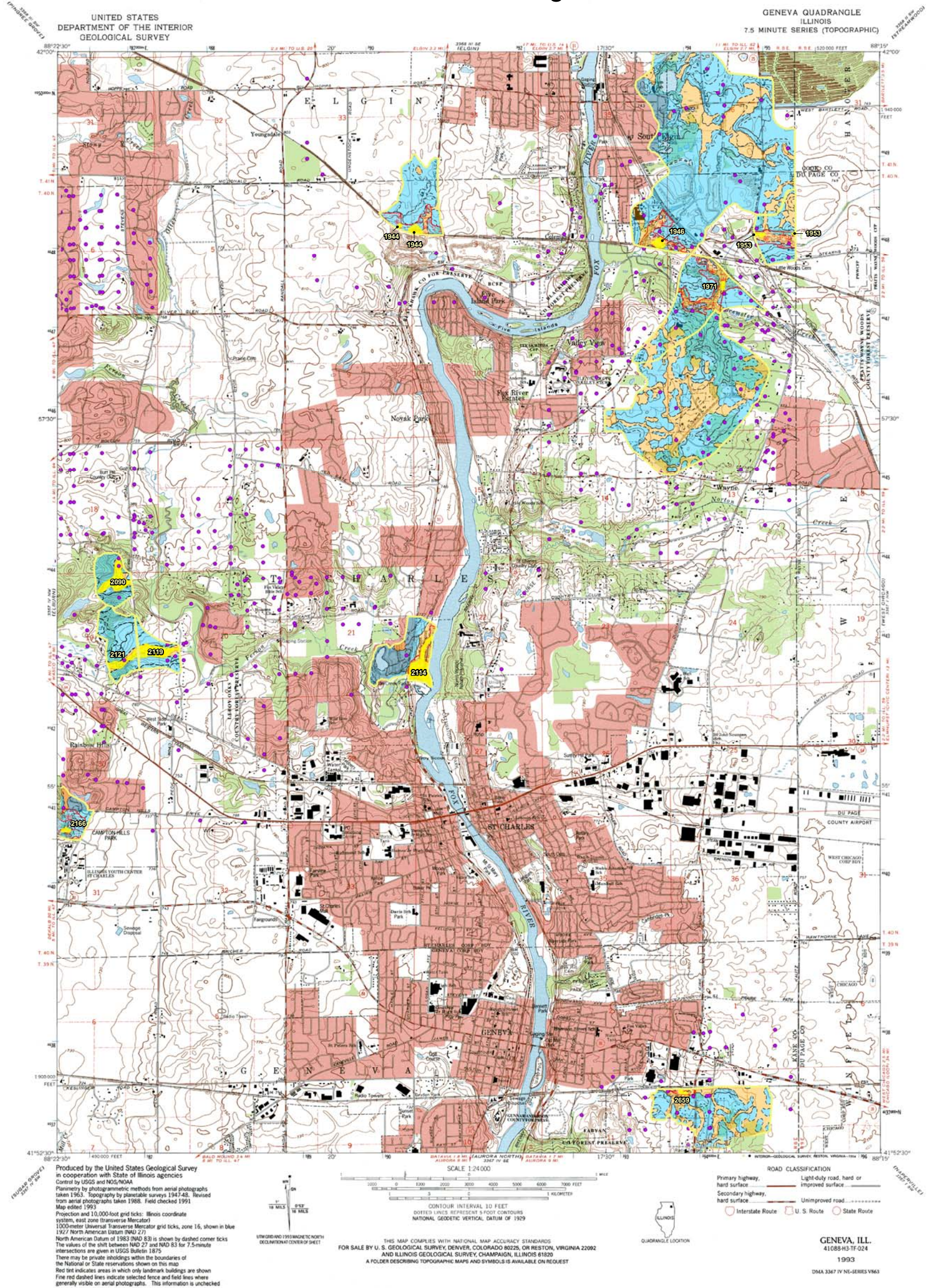


Kane County Fen Watersheds Location Geneva Quadrangle



KANE COUNTY DEPARTMENT OF ENVIRONMENTAL MANAGEMENT
719 Batavia Avenue
Geneva, IL 60134

Funded in part by a State/Tribal/Local wetland grant from the United States Environmental Protection Agency.
Grant #-CD975643-01

- ISGS Well Data Point
- Fen #
- Fen Polygons (ADID)
- Soils Boundary (USDA-NRCS 2001 SSURGO)
- Flow Through/Discharge Soils
- Recharge Soils
- Fen Watershed Boundary
- Wetland Boundary (ADID)

Geneva Quadrangle
Sheet 7 of 12
DATE: 02-09-04
REVISION DATE: 03-01-04
Source(s):
ADID wetlands and fen outlines provided by NIPC
USDA-NRCS 2001 SSURGO (Soil Survey Geographic) data

0 2,000 4,000 8,000 Feet