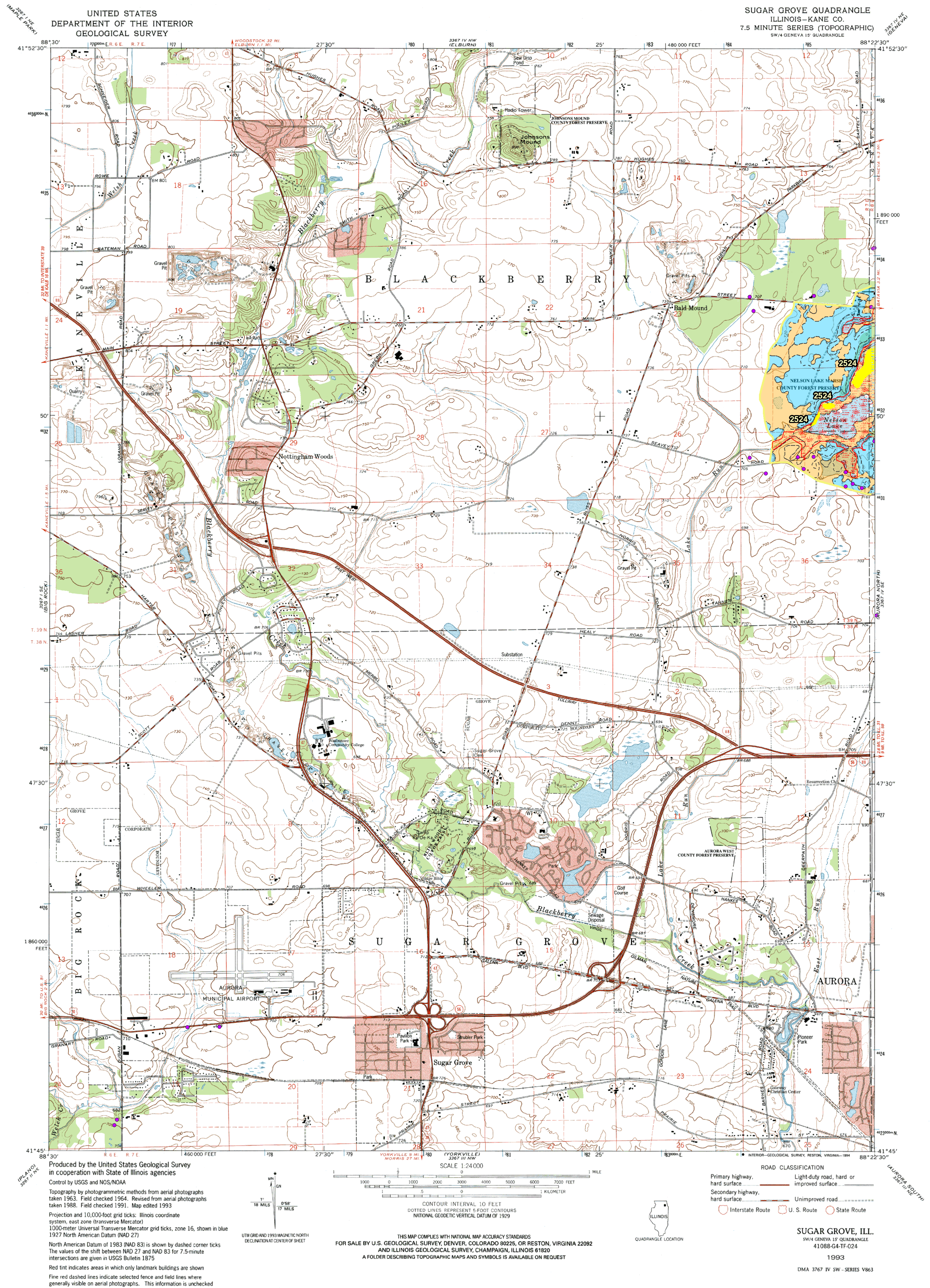


# Kane County Fen Watersheds Location Sugar Grove Quadrangle



**KANE COUNTY DEPARTMENT OF  
ENVIRONMENTAL MANAGEMENT**  
719 Batavia Avenue  
Geneva, IL 60134



Funded in part by a state  
and tribals grant from the  
United States Environmental  
Protection Agency.  
Grant #-CD975643-01



ISGS Well Data Point

## Fen Polygons (ADID)

**Soils Boundary** (USDA-NRCS 2001 SSURGO)

### Flow Through/ Discharge Soils

## Recharge Soils

Fen Watershed Boundary

Wetland Boundary (ADID)

### Sugar Grove Quadrangle

Sheet 9 of 12

DATE: 02-09-04

REVISION DATE: 03-01-04

Source(s):  
ADID wetlands and fen  
outlines provided by NIPC  
USDA-NRCS 2001 SSURGO  
(Soil Survey Geographic) data

SUGAR GROVE, ILL.  
SW/4 GENEVA 15" QUADRANGLE  
41088-G4-TF-024

1993

DMA 3767 IV SW-SERIES V863

0 2,000 4,000 8,000 Feet